



GRASSOLER

sofás desde 1960

COLECCION LEATHER



207 Camoscio

Características físicas
Physical datasheet

Tipo de piel	Bovino Europeo	Hide type	European bovine
Bronceado	Mineral	Tanning	Mineral
Tintura	Penetrante	Dyeing	Penetrating
Acabado	Poliuretano	Finishing	Polyurethane
Superficie	Grano suave	Surface	Smooth grain
Grosor	1.0 - 1.2 mm	Thickness	1.0 - 1.2 mm
Tamaño promedio	≥ 5.0 m ²	Average size	≥ 5.0 m ²

Características técnicas
Technical datasheet

Fricción seca	> 1.000 ciclos	ISO 11640	Dry friction	> 1.000 ciclos
Fricción húmeda	≥ 250 ciclos	ISO 11640	Damp friction	≥ 250 ciclos
Resistencia a la luz	≥ 4 escalas de azul	ISO 105-B02	Solidity in light	≥ 4 escalas de azul
Envejecimiento por calor	≥ 4 escalas de grises	ISO 17228	Heat ageing	≥ 4 escalas de grises
Definición en ancla	≥ 3.0 N/cm ²	ISO 11644	Finish locking	≥ 3.0 N/cm ²
Resistencia al fuego	Sin combustion	ISO 1021/1-2	Fire resistance	Sin combustion

BS 5852 part 1 source 0,1
IMO FTP8 Res. A652
California tb 117

Los valores expuestos pueden cambiar sin previo aviso / *The values shown may change without notice.*

Por razones técnicas no se puede garantizar la misma tonalidad de color entre diferentes lotes /

Due to technical reasons it is a not possible to guarantee the same tonality of colour from one lot to another.

Evitar limpiar con productos abrasivos / *Avoid cleaning with aggressive products.*

Mantener alejado de la luz solar y calor directo / *Keep away from direct sunlight and from direct heat.*

Limpiar regularmente con un paño suave y seco / *Regularly dust with a soft and drty cloth.*

Evitar el contacto entre colores claros y oscuros, incluso entre diferentes materiales / *Avoid contact between light and dark colours even between different materials.*



117 neve



195 latte



158 camelia



233 vaniglia



198 ostrica



197 avena



121 sabbia



176 paglia



179 lino



234 oasi



226 segale



239 polvere



199 canapa



207 camoscio



238 bracco



262 kaki



231 lattemiel



180 tortora



130 noisette



190 visone



169 banana



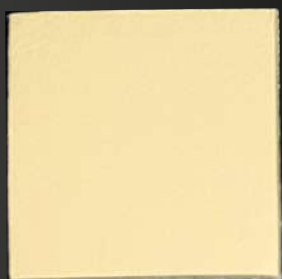
129 oca



174 siena



123 cappuccino



173 cipria



208 zabaione



170 albicocca



271 becco



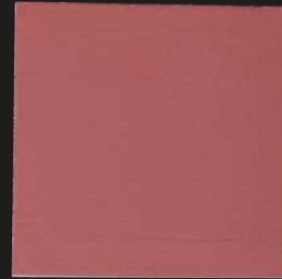
151 pesca



156 salmone



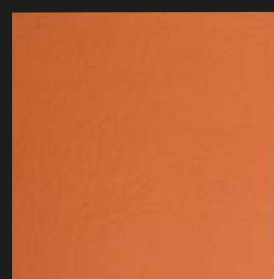
152 cotto



155 verona



149 arancione



184 zucca



157 minio



160 tegola



115 portofino



113 geranio



186 ciliegia



161 granato



187 orchidea



228 bulgaro



110 bordeaux



188 ciclamino



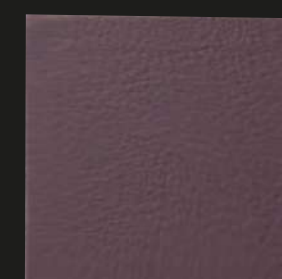
109 amaranto



185 melanzana



108 carruba



107 prugna



264 confetto



266 fenicottero



268 fragola



220 bouganville



263 malva



276 glicine



221 fucsia



223 viola



102 lilla



265 uva



267 susina



104 anemone



131 cuoio



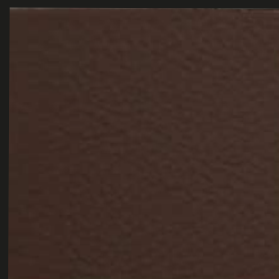
137 tabacco



274 dattero



189 caffè



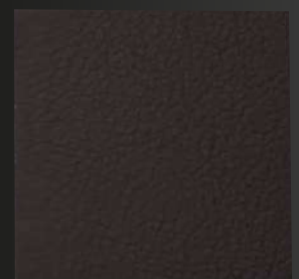
140 cioccolato



139 castagna



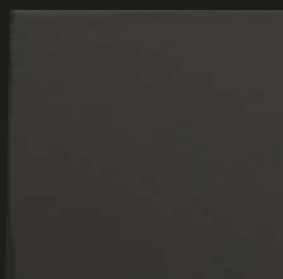
175 bruno



147 moretto



218 marmotta



216 sottobosco



217 fango



101 nero



229 crema



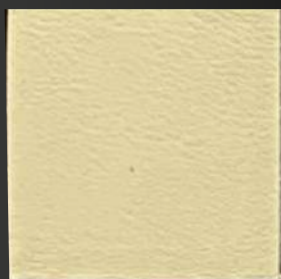
209 canarino



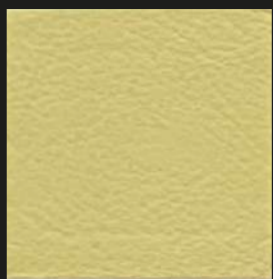
192 camomilla



148 girasole



232 lime



171 cedro



204 oliva



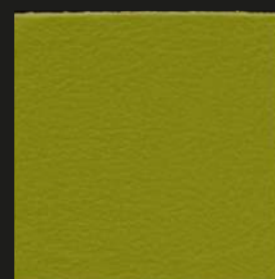
182 bambù



166 pistacchio



172 pera



212 pascolo



191 menta



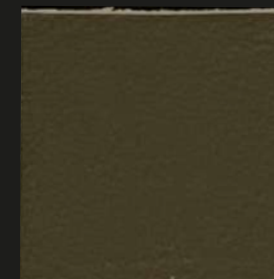
165 acqua



143 salvia



181 timo



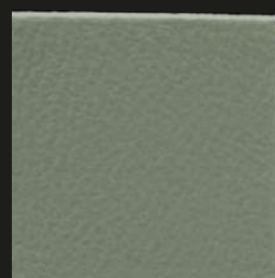
261 jungla



215 acquamarina



167 niagara



168 ruta



126 inglese



134 giada



135 malachite



136 carabi



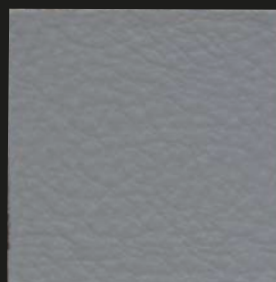
196 azteco



118 lichene



159 creta



202 peltro



203 elefante



163 ghiaccio



269 rugiada



146 lavanda



120 acciaio



227 fiordaliso



230 mare



270 cina



145 provenza



225 avio



177 genziana



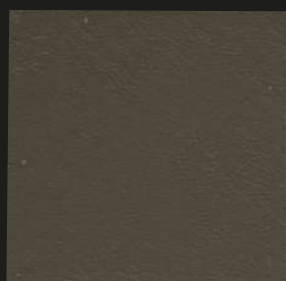
164 ottanio



105 bluette



262 mimetico



112 beola



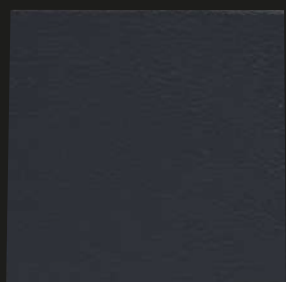
162 petrolio



128 abete



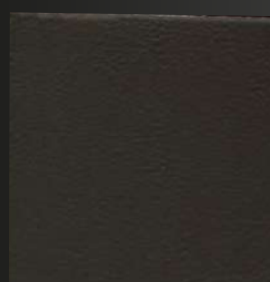
103 oceano



154 zaffiro



205 notte



141 antracite

GRASSOLER, S.A.

La Clota, 22

08290 Cerdanyola del Vallès

Barcelona, Spain

T: +34 93 580 88 35

e-mail: grassoler@grassoler.com

web: www.grassoler.com